



GAT MONTHLY MEMBERSHIP PROGRESS REPORT

Results as of: 4/30/2026

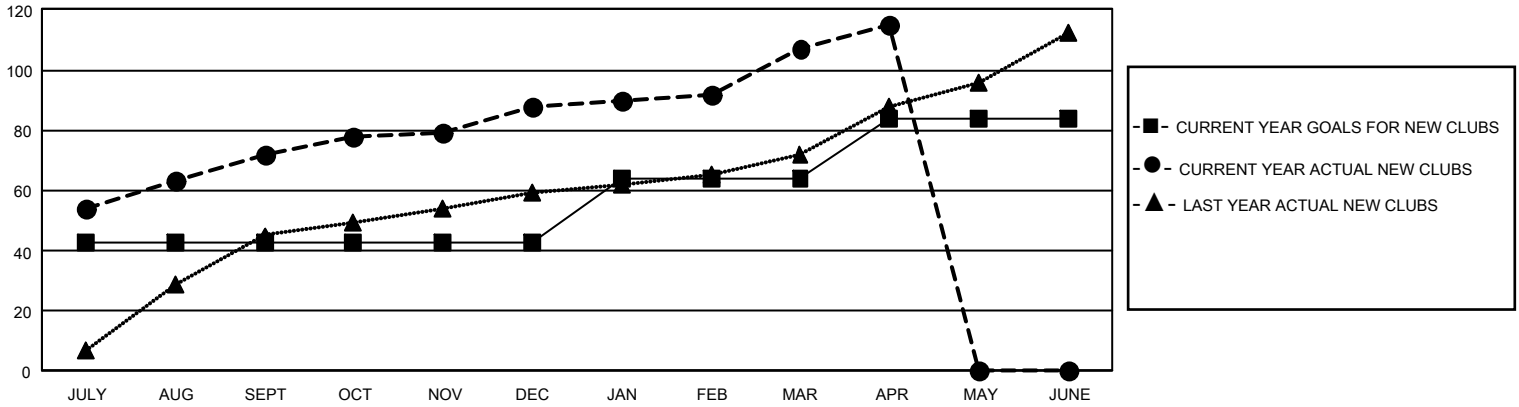
GMT Constitutional Area 6 - I, Group F

REPORT DOES NOT INCLUDE CLUBS IN UNDISTRICTED AREAS.

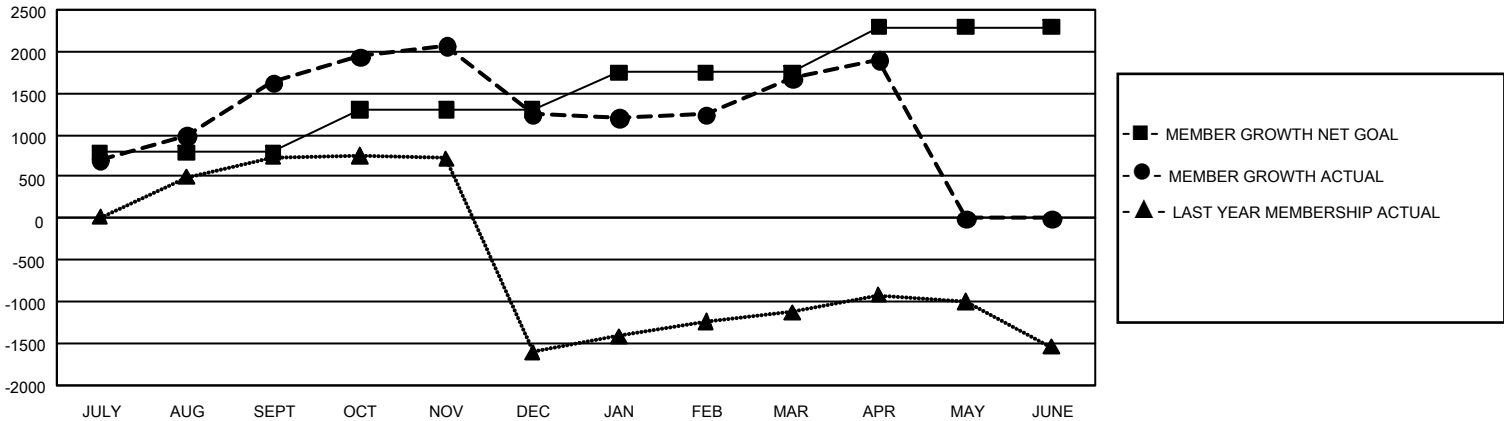
Clubs			
RESULTS FOR 2025-2026			
QUARTER	NEW CLUB GOAL	NEW CLUBS	DROPPED CLUBS
JULY/AUG/SEPT	129	72	5
OCT/NOV/DEC	0	16	53
JAN/FEB/MAR	63	19	2
APR/MAY/JUNE	60	8	2

Members			
RESULTS FOR 2025-2026			
QUARTER	MEMBER GROWTH NET GOAL	MEMBER GROWTH ACTUAL	DROPPED MEMBERS ACTUAL (including transfers)
JULY/AUG/SEPT	790	3,385	1,454
OCT/NOV/DEC	515	2,469	2,635
JAN/FEB/MAR	442	1,038	383
APR/MAY/JUNE	545	544	172

GOALS AND ACTUAL NEW CLUBS CUMULATIVE



GOALS AND ACTUAL MEMBERS CUMULATIVE



DROPPED CLUBS: 62	835 CLUBS OF 1,290 ADDED 1 OR MORE NEW MEMBERS	GENDER DISTRIBUTION	
		MALE 23,668 (72.09%) FEMALE 9,154 (27.88%) NON BINARY 0 (0.00%) PREFER NOT TO ANSWER 11 (0.03%)	
DROPPED MEMBERS		CLICK HERE FOR CUMULATIVE MEMBERSHIP DATA	
DECEASED 68 CLUB CANCELLED 1,301 OTHER 3,263 TOTAL 4,632	TOTAL FAMILY UNIT MEMBERS 12,116 FAMILY MEMBERS PAYING HALF DUES 7,363		